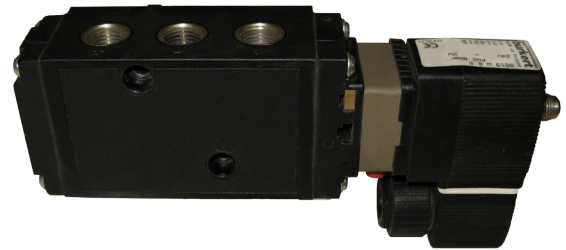


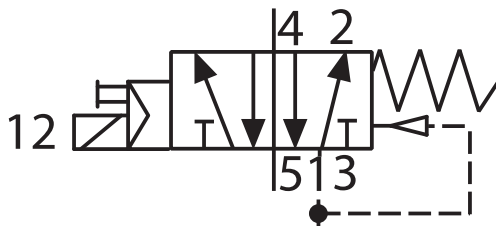
- Gehäuse aus Polyamide
- Schutzart IP65
- NAMUR Anschluß nach VDI/VDE 3845
- Mit oder ohne Handnotbetätigung

**bürkert**

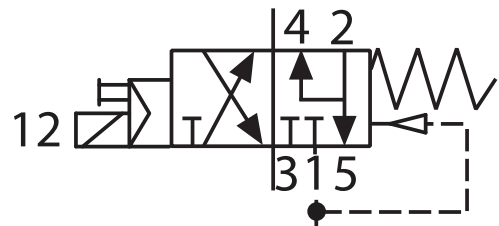


**FUNKTION:**

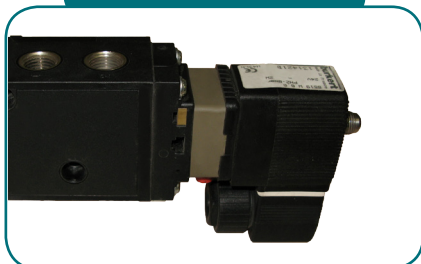
5/2-Wege Ausführung



3/2-Wege Ausführung



**MNAM**



- Spannungen: 24V DC, 24V AC, 110V DC, 110V AC, 230V DC und 230V AC

**MNAMX**



- Spannungen: 24V UC, 110V UC und 230V UC
- ATEX II 2G Ex eb mb IIC T5 Gb
- ATEX II 2G Ex mb tb IIIC T95°C Db

**MNAMXC**



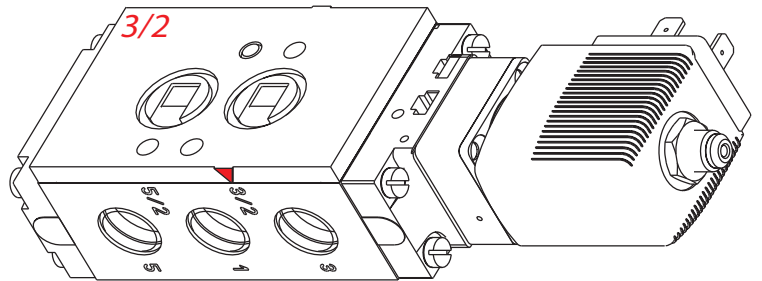
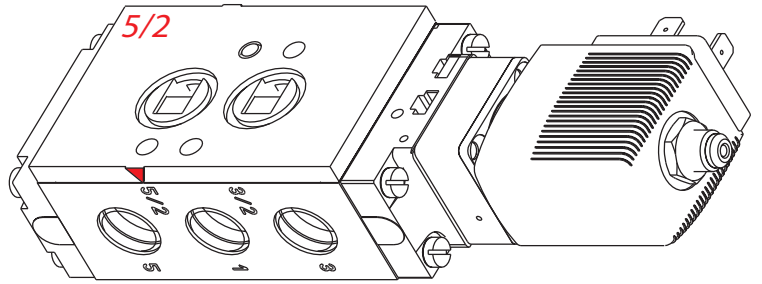
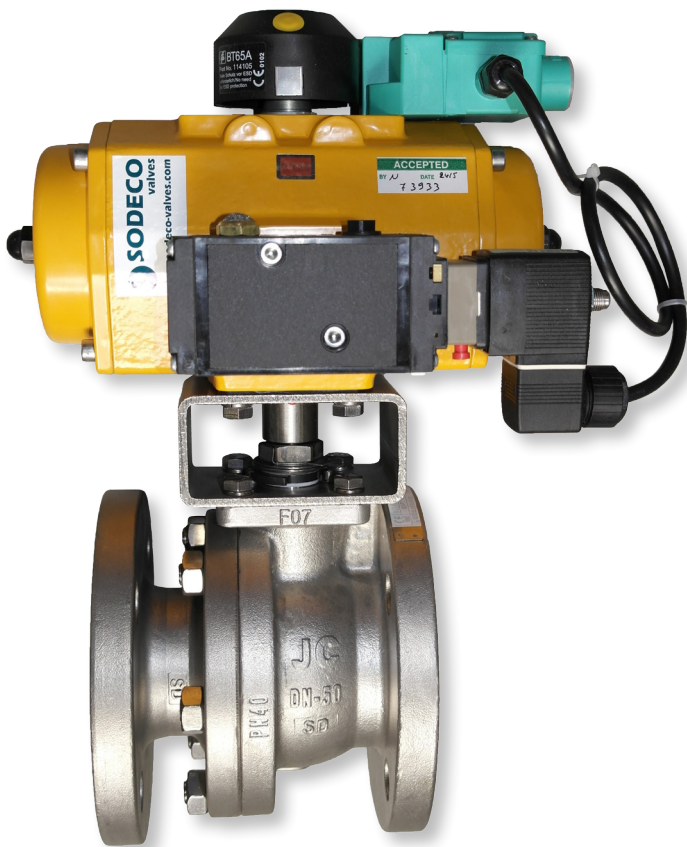
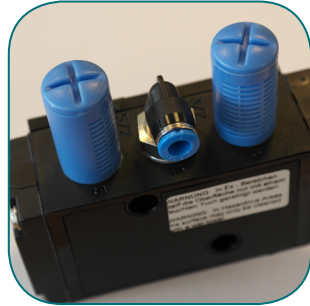
- Spannungen: 24V UC, 110V UC und 230V UC
- ATEX II 2G Ex mb IIIC T5 Gb
- ATEX II 2G Ex mb IIIC T95°C Db

**MNAMI**



- Spannungen: 24V DC
- ATEX II Ex ia IIC T6

**ANSCHLUSSMÖGLICHKEITEN**



**DROSSELPLATTE**

**BELÜFTUNGSBLOCK**

**SPERR UND ENTLÜFTUNG**

